

526 Crown Stone Road
Marydel, MD 21649
Phone (410) 482-6474
Fax (410) 482-2870



335 Strauss Ave.
Marydel, DE 19964
Phone (302) 492-1245
Fax (302) 492-1245

FOR IMMEDIATE RELEASE

MARYDEL, Delaware – March 10, 2016 – DPC Emergency Equipment is pleased to announce that the Baltimore County Fire Department has placed an order for four PL Custom Titan ambulances. This additional purchase will bring the total number of PL Custom units in the Baltimore County fleet to 25 units.

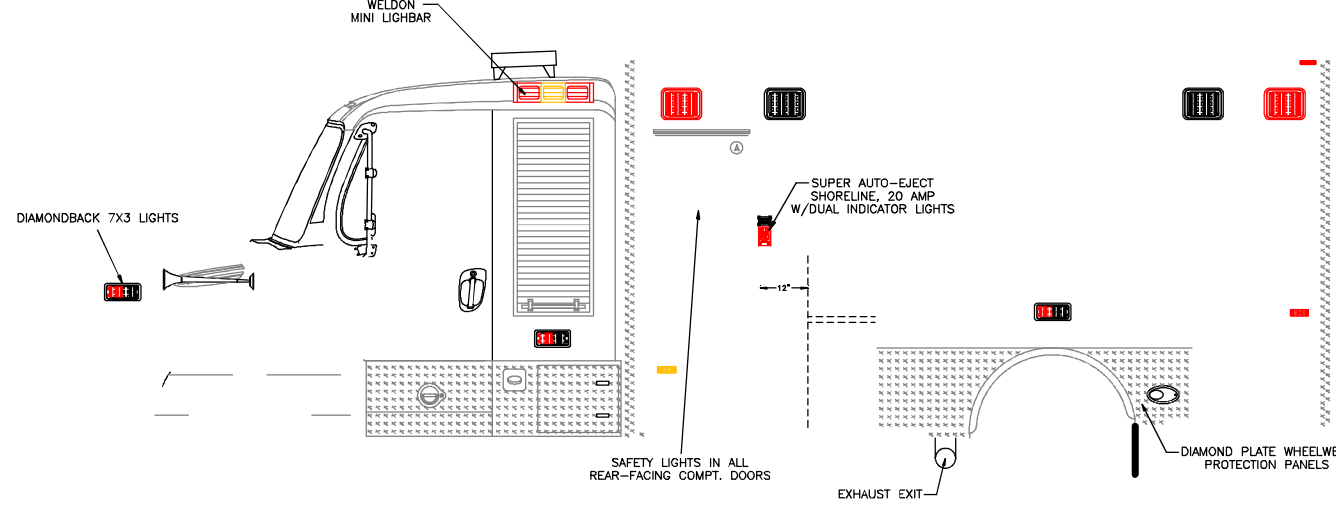
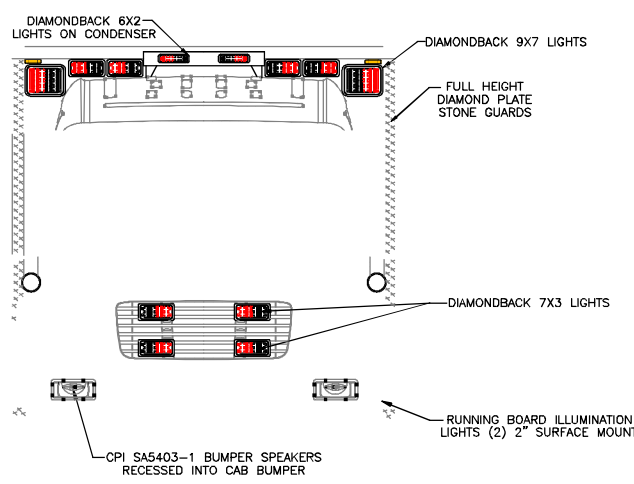
- 2016 Freightliner M2 extended cab chassis
- Extended cab compartments
- Sigtronics vehicle intercom system
- PL Custom Titan 176” body
- 75” interior headroom
- PL Custom “Medic in Mind” curbside layout
- Street side squad bench
- 6” cutback on each side
- PL Custom/V-MUX Oxygen Monitoring System
- Weldon V-MUX multiplex electrical system
- Weldon Diamondback LED warning lights
- Weldon 8051 low profile LED dome lights
- Hansen LED compartment strip lights
- ROM Durolumen V3 LED ceiling lights
- Stryker Power-LOAD stretcher lift system
- Custom paint, lettering and graphics by PL Custom

The units were sold by John Fisher.

A family owned and operated company, DPC Emergency Equipment has continuously served public safety personnel in Delaware and Maryland for over 25 years. DPC is an authorized sales and service dealer for Rosenbauer, PL Custom and Rescue 1 in Delaware and Maryland. To learn more about our company, people, products and services, visit our website at www.dpcemergency.com.

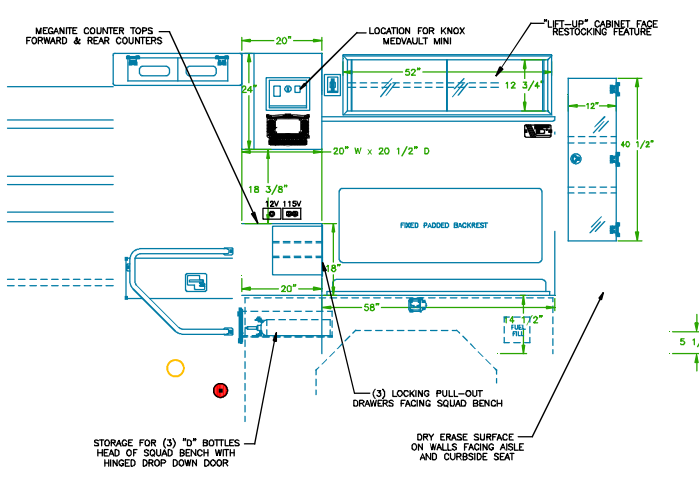
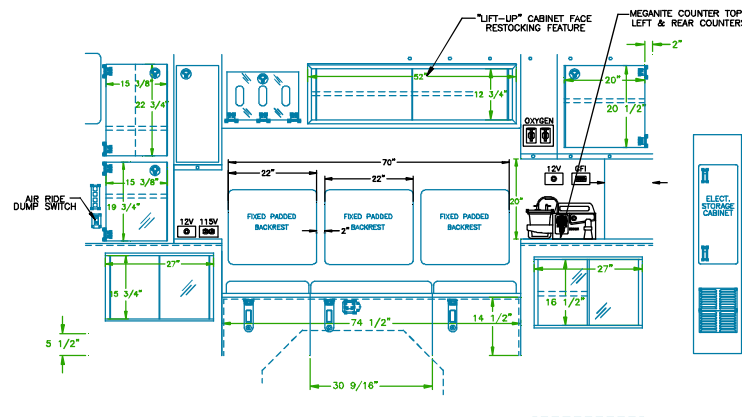
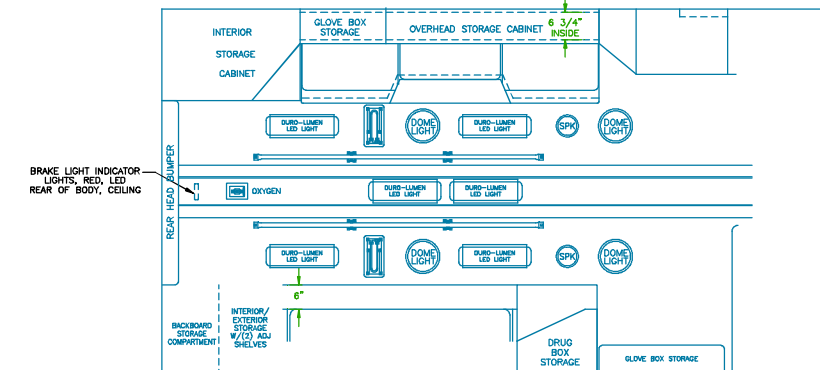
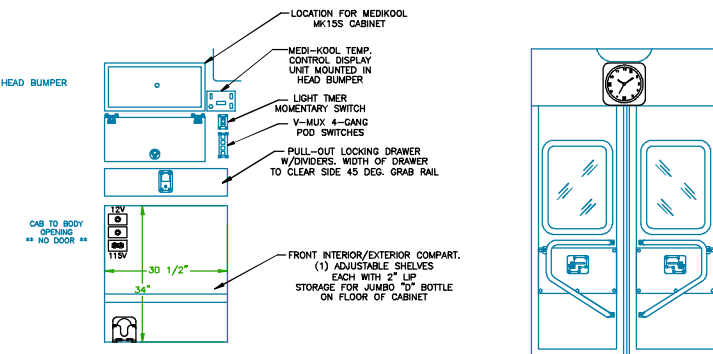
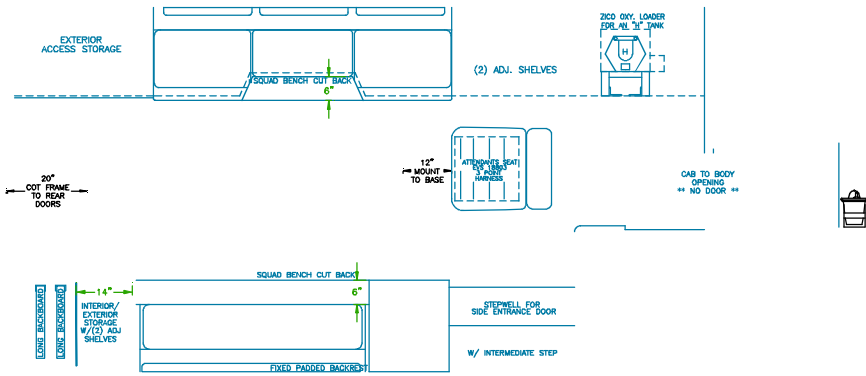
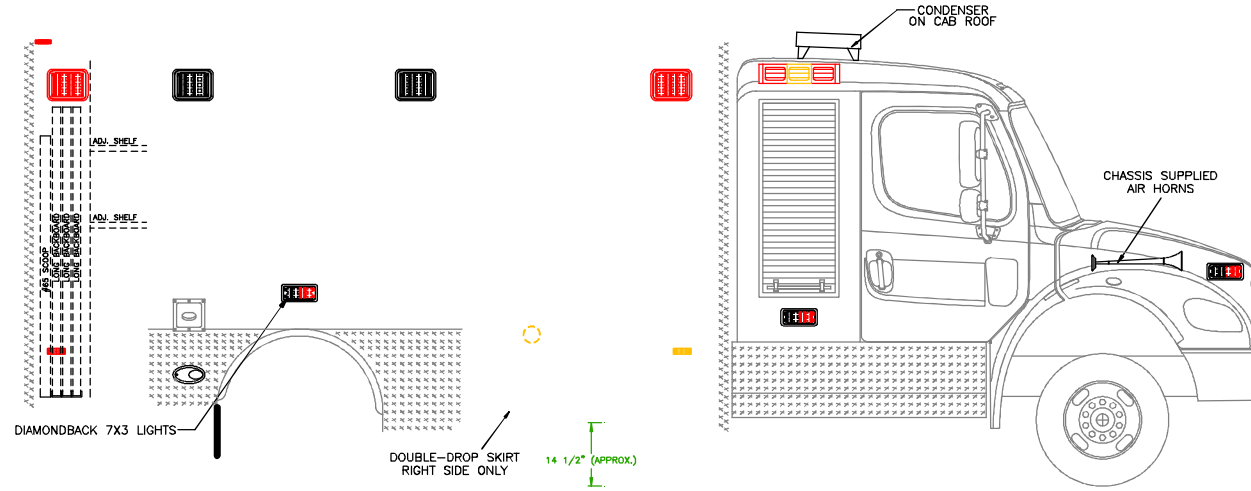
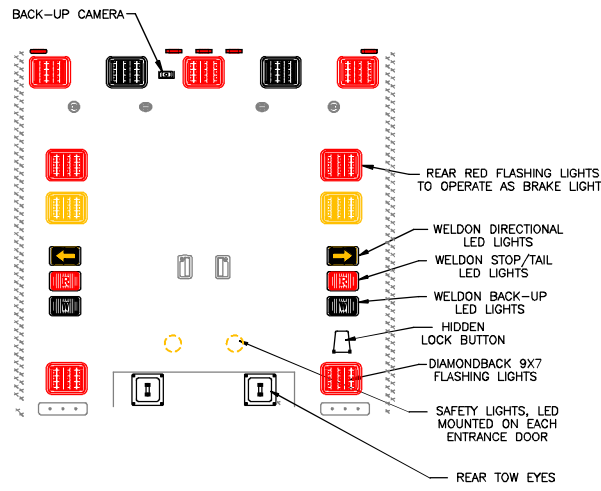
Visit the Baltimore County Fire Department online at <http://www.baltimorecountymd.gov/Agencies/fire/index.html>

Visit PL Custom Emergency Vehicles online at www.plcustom.com.



23 72 21 3/4 OXYGEN STORAGE

ACCESS STORAGE
EXTERIOR STORAGE



"NOTICE"
This drawing and data thereon shall not be duplicated, used or disclosed to others for procurement or manufacturing purposes, except as otherwise authorized by contract, without written permission of P.L. CUSTOM BODY & EQUIPMENT CO. JNC. We reserve the right to make changes at any time, without notice, in materials, equipment & specifications. Written specifications take precedence over drawings which are for clarity only. All reproductions shall bear this notice.

I	0010	10/8/13	DP
H	0009	9/3/13	DP
ALT "D"	0008	4/2/13	DR
G	0008	2/27/13	DR
F	0007	2/8/13	DR
E	0006	9/25/12	DR
D	0005	9/18/12	DR
C	0004	9/11/12	DR
B	0003	8/21/12	DR
A	0002	8/14/12	DR
DWG REV.	OW REV.	DATE	DRW

TITAN SERIES			
DATE	0010	10/8/13	DP
CUSTOMER	BALTIMORE		
VEHICLE TYPE	FREIGHTLINER 67 SD CA 200" B.B.		
DO NOT SCALE DRAWING			
DRAWN BY	DIANA BITTER	DATE	8/10/12
SCALE	3/4" = 1'-0"	SHEET	1 OF 1
COMP	0001	TRASH	A2272