



Delmarva Pump Center, Inc. / DBA
DPC Emergency Equipment
www.dpcemergency.com

☐ 335 Strauss Avenue
Marydel, DE 19964
Phone: (302) 492-1245
Fax: (302) 492-1340

☐ 526 Crown Stone Road
Marydel, MD 21649
Phone: (410) 482-6474

FOR IMMEDIATE RELEASE

MARYDEL, Delaware – September 23, 2013 – DPC Emergency Equipment is pleased to announce that the Baltimore County Fire Department has added seven additional PL Custom ambulances to the two previous orders that were received in July and also early this month. The new medic units will be built on 2014 Freightliner M2 extended cab chassis. This additional purchase brings the order total to 21 units.

- 2014 Freightliner M2 extended cab chassis
- Extended cab compartments
- Sigtronics vehicle intercom system
- PL Custom Titan 176" body
- 75" interior headroom
- PL Custom "Medic in Mind" curbside layout
- Streetside squad bench
- 6" cutback on each side
- PL Custom/V-MUX Oxygen Monitoring System
- Weldon V-MUX multiplex electrical system
- Weldon Diamondback LED warning lights
- Weldon 8051 low profile LED dome lights
- Hansen LED compartment strip lights
- ROM Durolumen V3 LED ceiling lights
- Stryker Power-LOAD stretcher lift system
- Custom graphics package by PL Custom

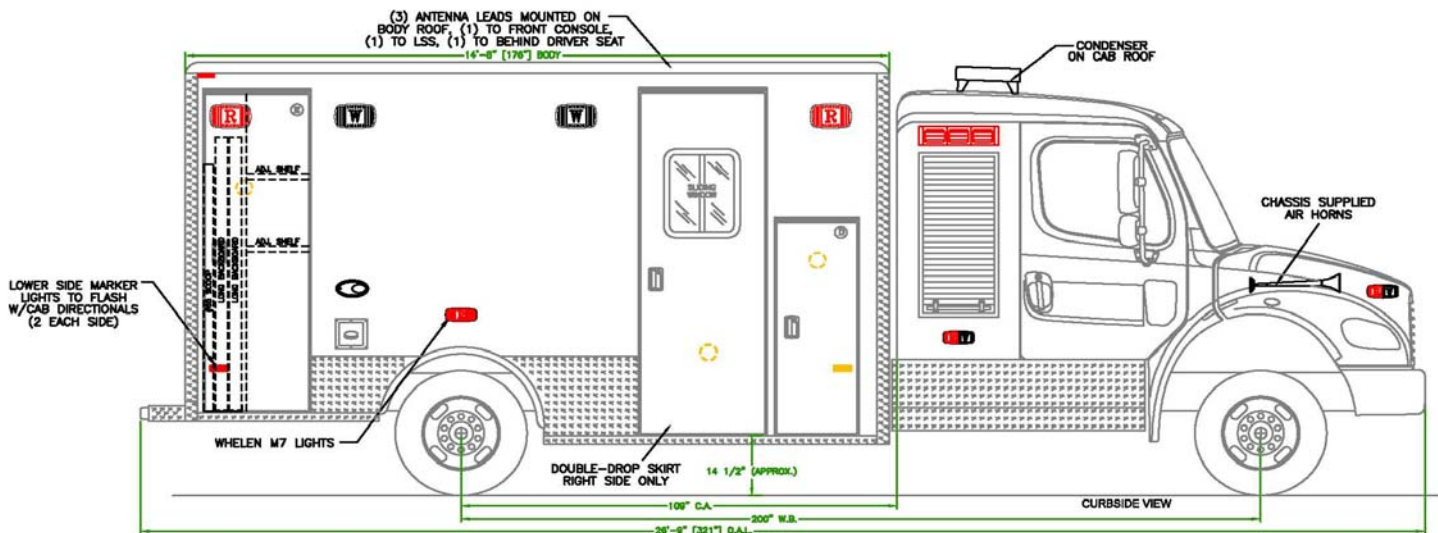
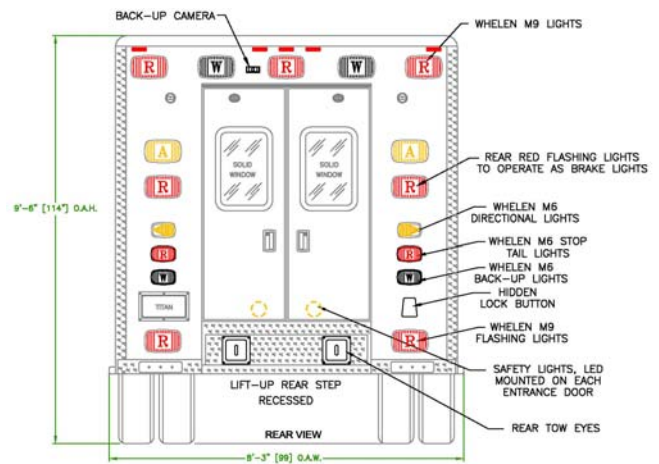
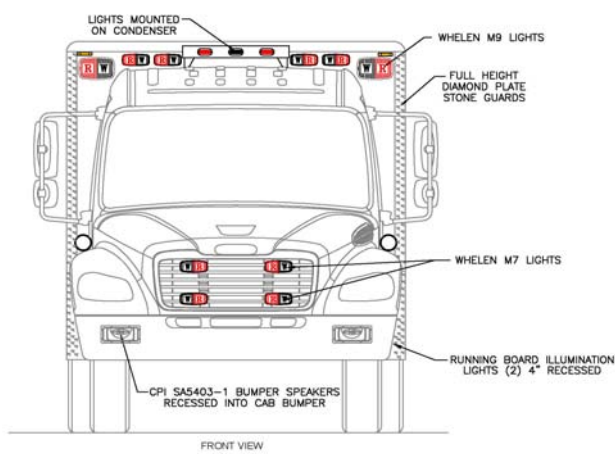
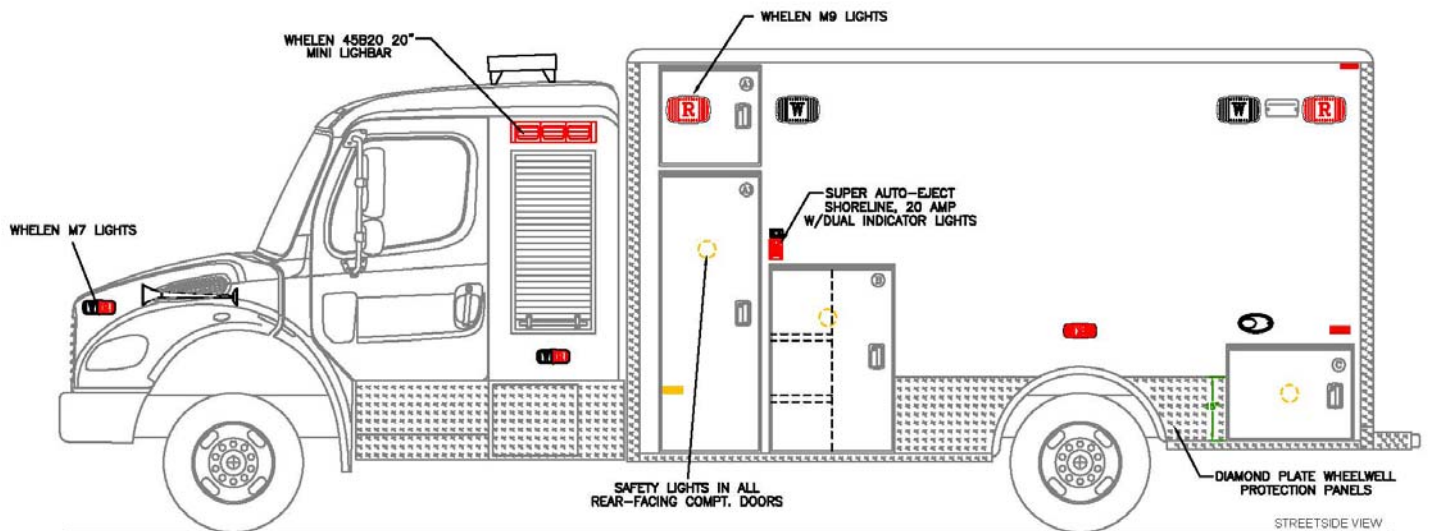
The units were sold by John Fisher.

A family owned and operated company, DPC Emergency Equipment has continuously served public safety personnel in Delaware and Maryland for 23 years. DPC is an authorized sales and service dealer for Rosenbauer, PL Custom, and Wheeled Coach in Delaware and Maryland. To learn more about our company, people, products and services, visit our website at www.dpcemergency.com.

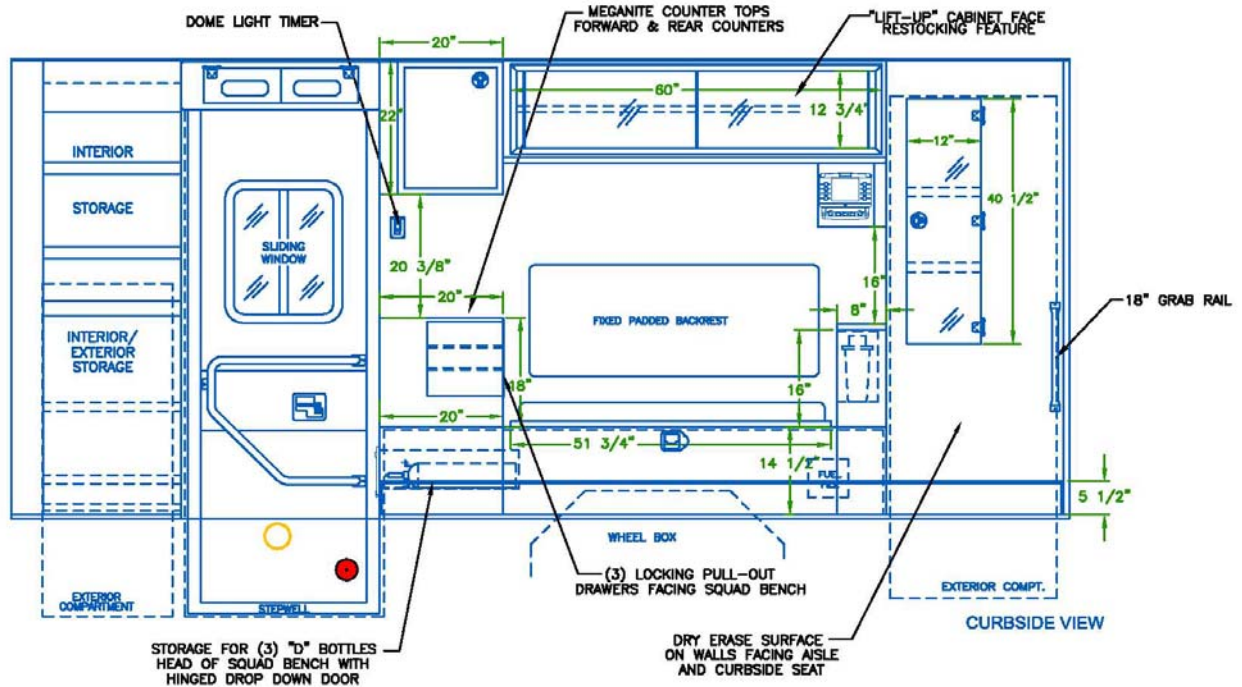
Visit the Baltimore County Fire Department online at
<http://www.baltimorecountymd.gov/Agencies/fire/index.html>

Visit PL Custom Emergency Vehicles online at www.plcustom.com.

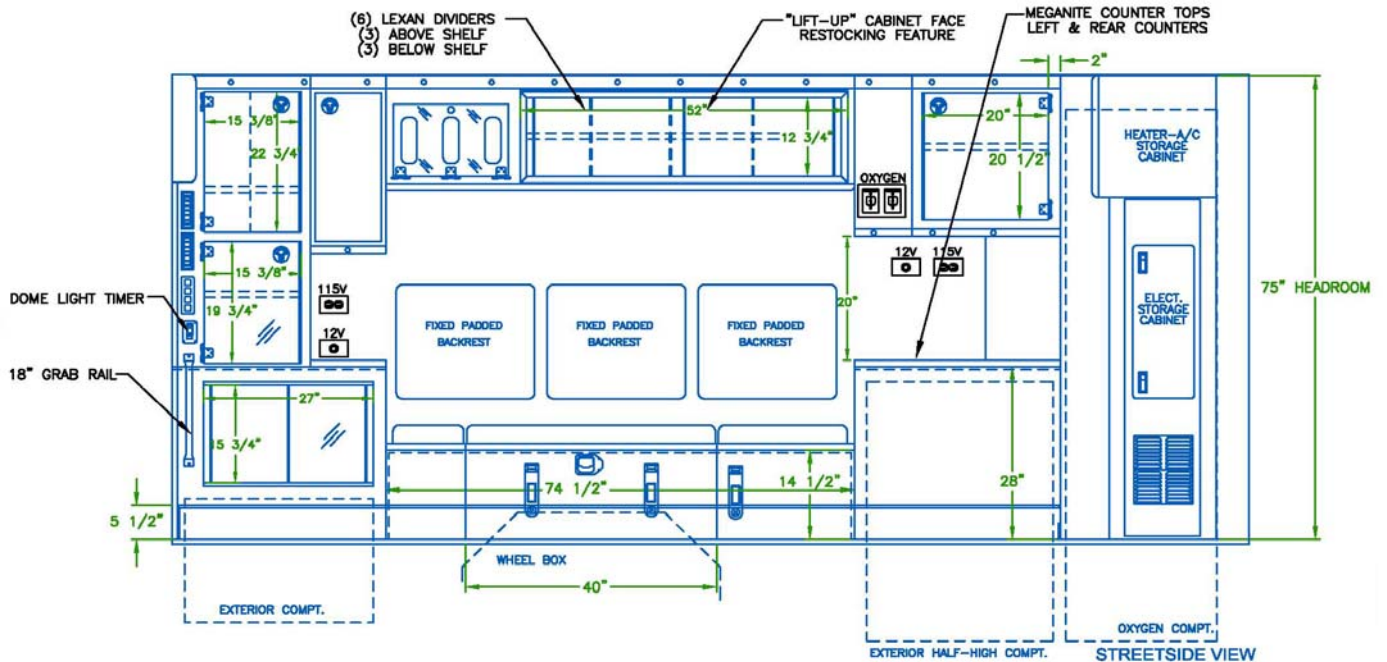
EXTERIOR CONCEPT DRAWINGS



INTERIOR CONCEPT DRAWINGS



Curbside Layout



Streetside Layout