



Delmarva Pump Center, Inc. / DBA  
**DPC Emergency Equipment**  
[www.dpcemergency.com](http://www.dpcemergency.com)

- 335 Strauss Avenue  
Marydel, DE 19964  
Phone: (302) 492-1245  
Fax: (302) 492-1340
- 526 Crown Stone Road  
Marydel, MD 21649  
Phone: (410) 482-6474

---

## FOR IMMEDIATE RELEASE

MARYDEL, Delaware – January 17, 2014 - The Marlboro Volunteer Fire Department in Prince George's County, Maryland has signed a contract with DPC Emergency Equipment for the purchase and delivery of a new PL Custom Classic Type I ambulance. This will be the very first ambulance for the department.

### AMBULANCE 20

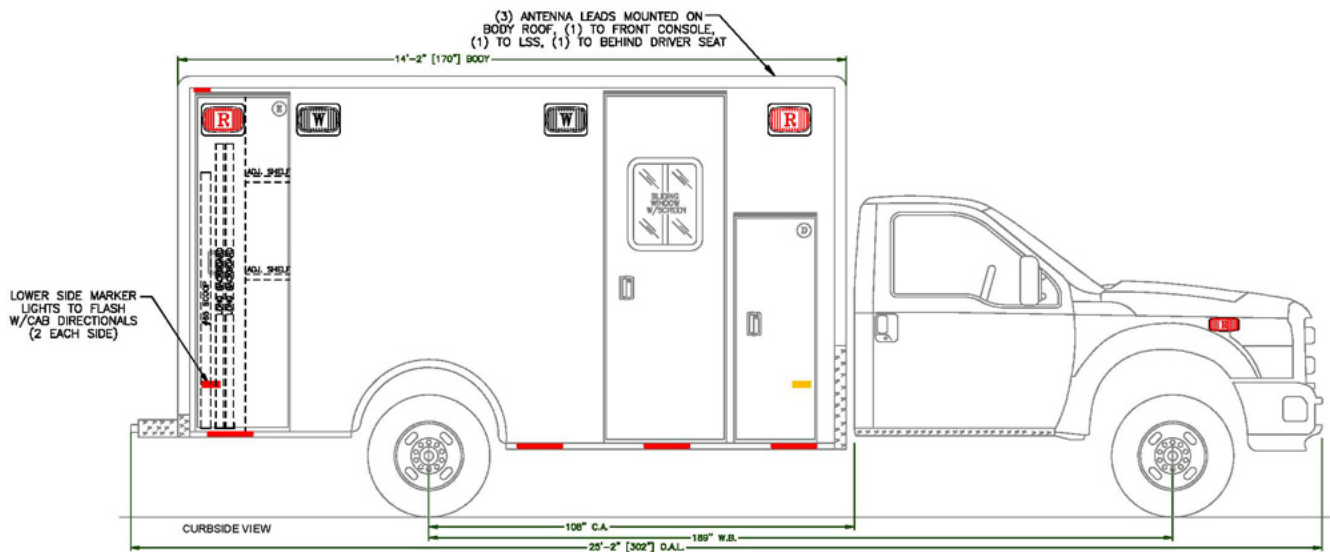
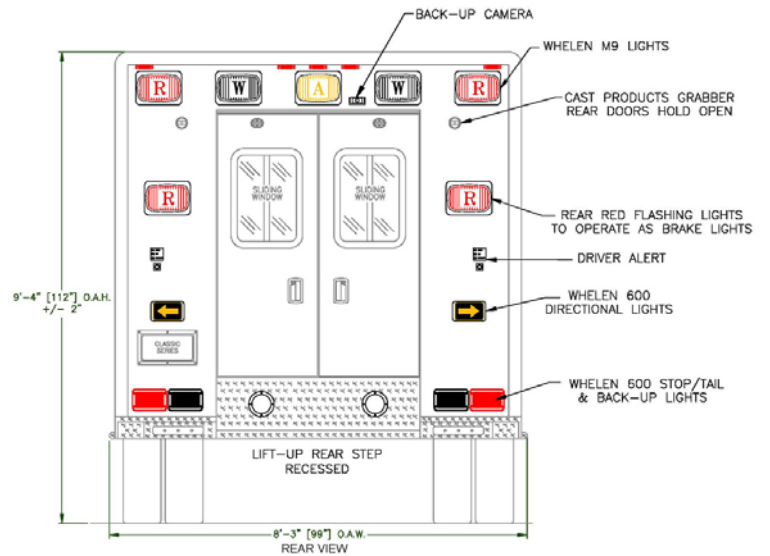
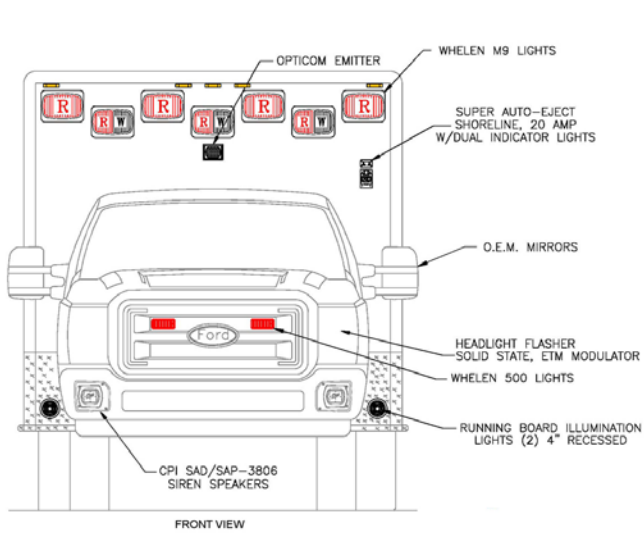
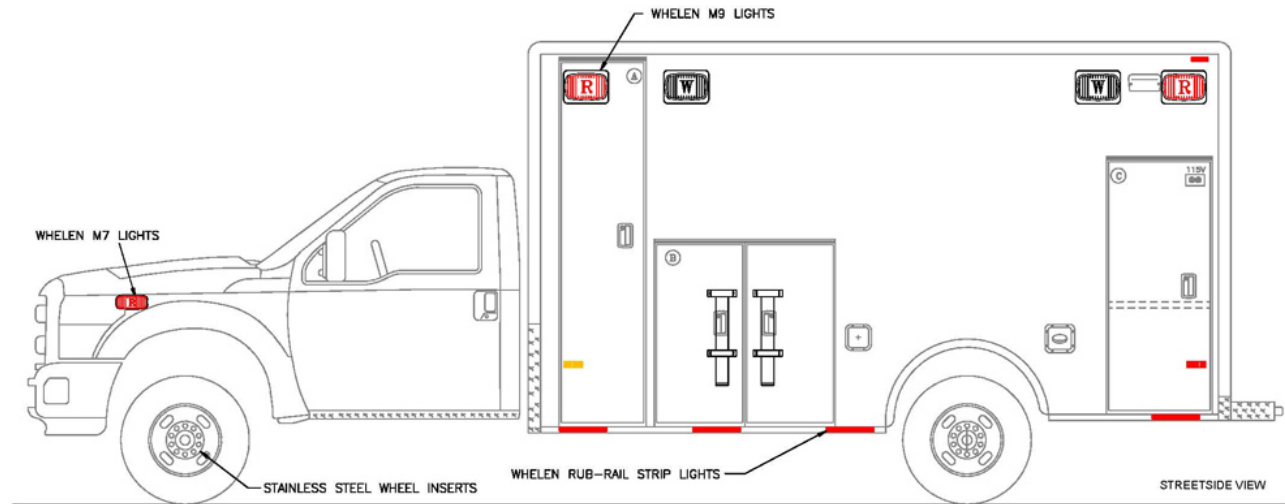
- 2014 Ford F-450 4x4 chassis
- LiquidSpring compressible liquid adaptive suspension system
- PL Custom Classic 170" body
- 72" interior headroom
- Double wide CPR seat
- PL Custom 12-volt electrical system w/Lifetime transferrable warranty
- Whelen 295SLSA1 siren w/powercall tone and Whelen Howler low frequency siren
- Whelen M Series LED warning and scene lights
- Whelen Strip-Lite LED warning lights in "C" channel rub rails
- Zico electric oxygen lift
- Whelen LED dome lights and ROM LED ceiling lights
- Firecom 5100 Series vehicle intercom system
- Rosco DVXC3 event recording system and backup camera
- Vanner 1050CUL-DC 1,050-watt inverter w/55-amp battery charger
- Custom Maryland State Flag graphic on rear entry doors.
- Custom paint, lettering and graphics by PL Custom

A family owned and operated company, DPC Emergency Equipment has continuously served public safety personnel in Delaware and Maryland for 24 years. DPC is an authorized sales and service dealer for Rosenbauer and PL Custom in Maryland and Delaware. To learn more about our company, people, products and services, visit our website at [www.dpcemergency.com](http://www.dpcemergency.com).

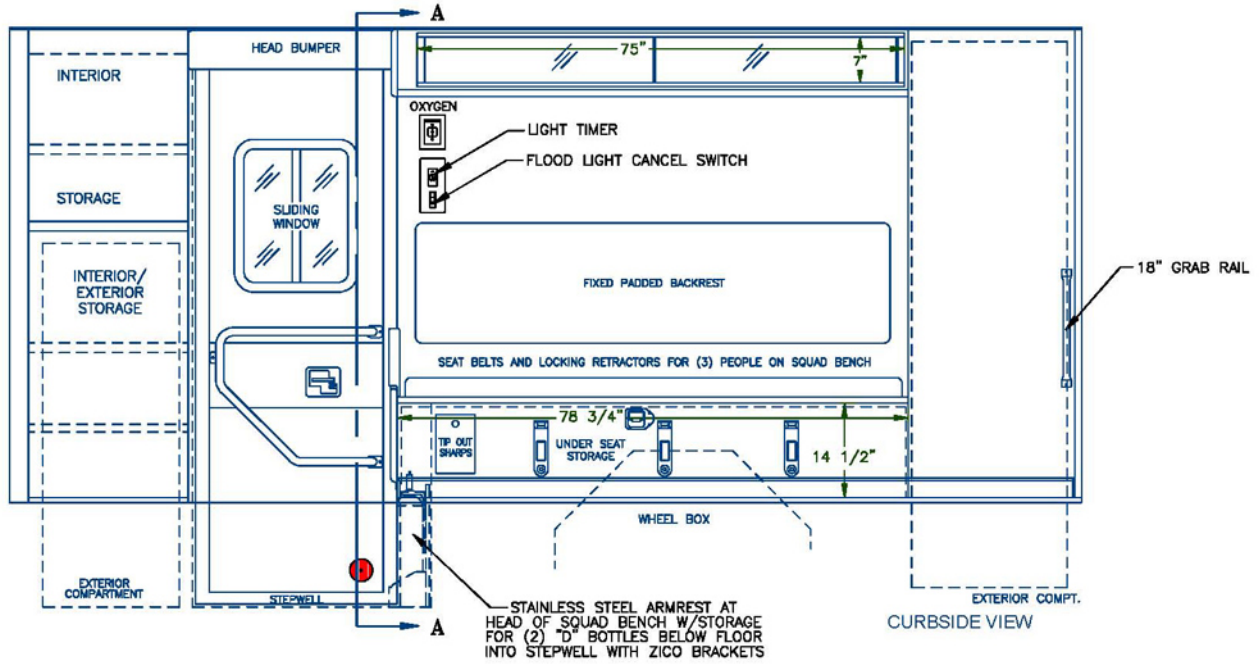
Visit the Marlboro Volunteer Fire Department online at [www.marlbороfire.com](http://www.marlbороfire.com).

Visit PL Custom Emergency Vehicles online at [www.plcustom.com](http://www.plcustom.com).

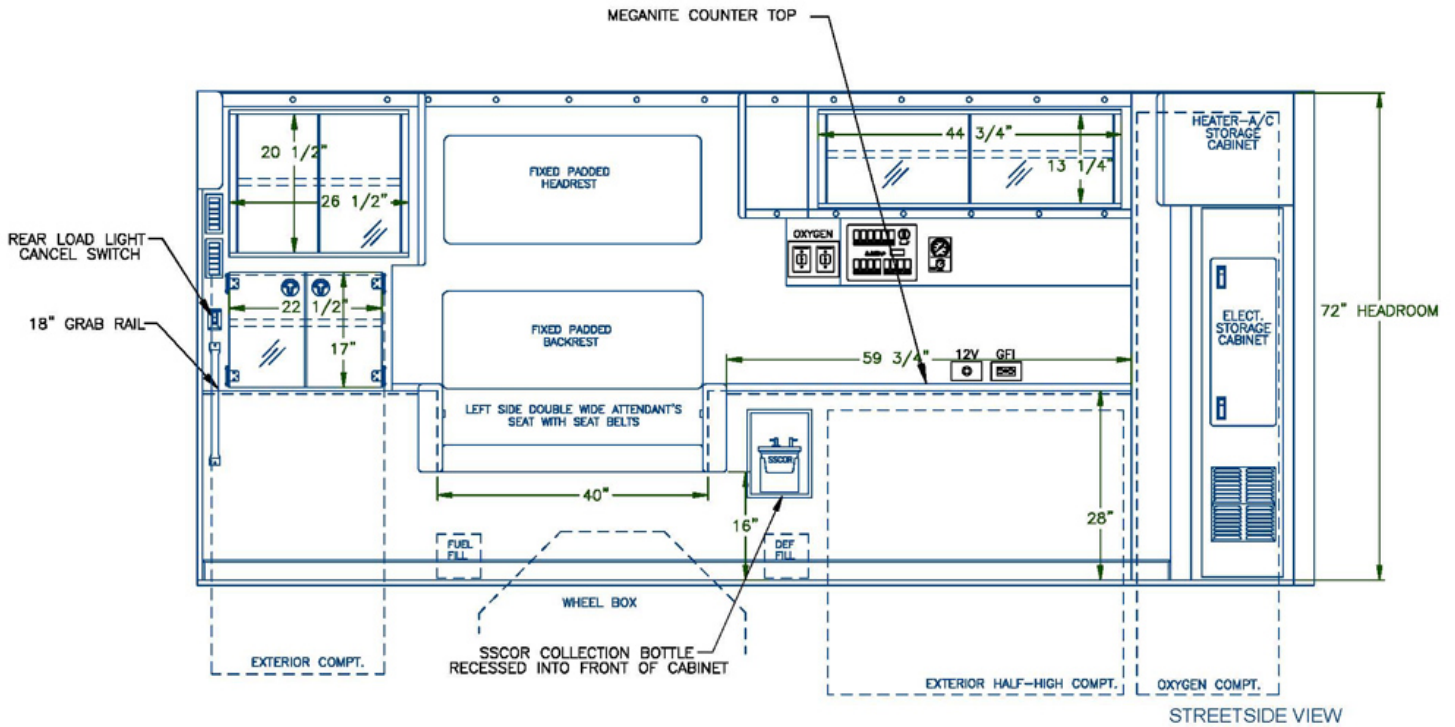
# EXTERIOR CONCEPT DRAWINGS



# INTERIOR CONCEPT DRAWINGS



**Curbside Layout**



**Streetside Layout**